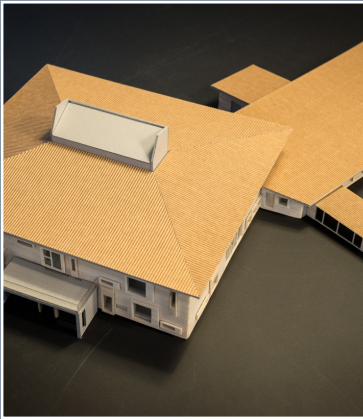


SWECO UMEÅ



Sweco Umeå

Country: Sweden
Contact name: Thomas Greindl
Company name: Sweco Umeå
Address: Västra Norrlandsgatan 10B
Tel.: +46 90-715215
Email: thomas.greindl@sweco.se
Website: www.sweco.se

Natural Energy Efficiency and Sustainability (NEES)

Best Practice in Products and Services

1. Service Description

Project, project program focused sustainable solutions, environmental and quality planning, LCA, energy based estimates, resource-efficient and maintenance friendly design solutions, passive house concept, environmental certifications

2. 'Natural' and/or 'recycled' content

Project dependent

3. Percentage of the product processed and / or manufactured in the NPP region

100%

4. Recyclability / biodegradability

The building, materials and construction is prepared for a sustainability and environmental certification; Sweden Green Building Council, SGBC / BREEAM in classing the second highest class "excellent" with the potential for a rating in the highest class with "outstanding", and Environmentally Classified Building with the highest classification "GOLD".

5. Contribution to energy efficiency in buildings

Reduces heat energy by about 80%
U-values that apply to the project in Umeå:
walls: 0.09 W / (m² K)

window: 0.68 W / (m² K), glass facades: 0.8 W / (m² K), ceiling: 0.07 W / (m² K), the Ground: 0.07 W / (m² K)
depends on future energy price development;

6. Lifespan

50 or 50+

7. Costs – Product and maintenance

Project dependent

8. Examples of usage

Hedlunda school, Umeå

Sweco Umeå

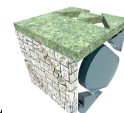


Northern
Periphery
Programme
2007–2013

Innovatively investing
in Europe's Northern
Periphery for a sustainable
and prosperous future



European Union
European Regional Development Fund



The above information was supplied by the producers/service provider and has been verified by the NEES Project.